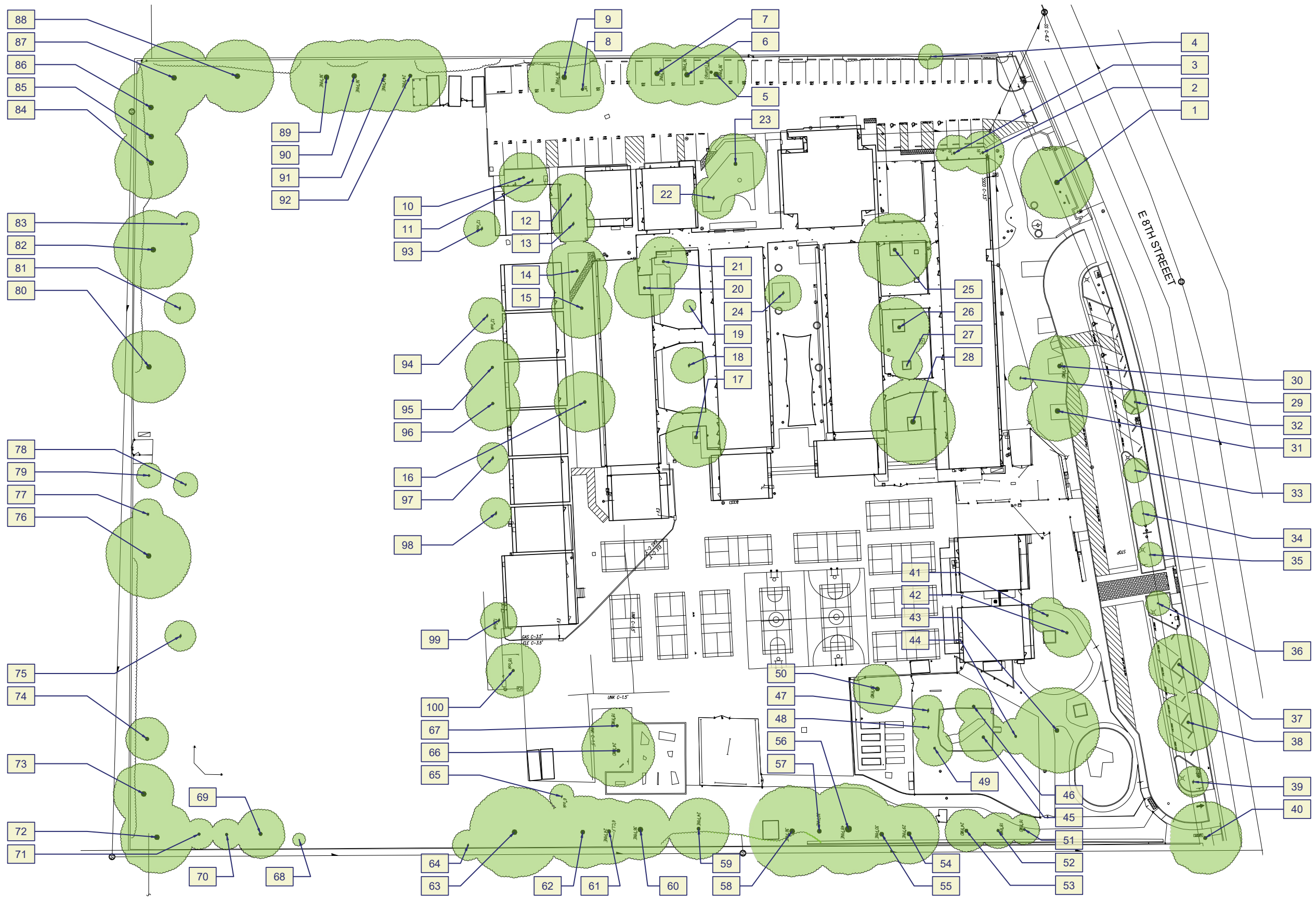


**Valley Oak Preschool/
Da Vinci Charter Academy**
1400 E 8th St, Davis, CA 95616



Tree Data

ID	Tree species - Common Name	Botanical Name	Deciduous/ Evergreen	Approx. Height Range (ft)	Approx. Canopy Width (ft)	Trunk Size (DBH) (in)	Observable Health Condition	Notes
VO-1	Valley oak	Quercus lobata	Deciduous	52	55	42	Needs cleanup pruning where branches are broken in the canopy	
VO-2	Chinese Pistache	Pistacia chinensis	Deciduous	67	56	18	Sucker growth at base, otherwise fair, one broken limb up top	3' from building and 3' from parking lot, very narrow space
VO-3	Chinese Pistache	Pistacia chinensis	Deciduous	67	56	18	Sucker growth at base, otherwise fair, poor structure	3' from building and 3' from parking lot, very narrow space
VO-4	Valley Oak	Quercus lobata	Deciduous	65	73	22	Poor, should be removed	On property line, covered in a vine, in a fence
VO-5	Aleppo Pine	Pinus halepensis	Evergreen	81	56	35	No Observable Problems	In parking lot, large secondary branch
VO-6	Aleppo Pine	Pinus halepensis	Evergreen	81	56	28	No Observable Problems	In parking lot, large secondary branch
VO-7	Aleppo Pine	Pinus halepensis	Evergreen	70	56	40	No Observable Problems	In parking lot, large secondary branch
VO-8	Chinese Hackberry	Celtis sinensis	Deciduous	65	34	25	No Observable Problems	Low crouch, dual leader
VO-9	Aleppo Pine	Pinus halepensis	Evergreen	84	42	44	No Observable Problems	In parking lot, large secondary branch, lopsided to south
VO-10	Chinese Pistache	Pistacia chinensis	Deciduous	48	51	16	No Observable Problems	Very close to classroom, has palm tree growing next to it
VO-11	Mexican Fan Palm Tree	Washingtonia robusta	Evergreen	8	9	7	Volunteer palm tree, can be removed	
VO-12	Chinese Pistache	Pistacia chinensis	Deciduous	42	45	12	No Observable Problems	In lawn
VO-13	Chinese Pistache	Pistacia chinensis	Deciduous	42	40	13	No Observable Problems	In lawn
VO-14	Japanese pagoda	Sophora Japonica	Deciduous	53	56	20	No Observable Problems	In lawn
VO-15	Japanese pagoda	Sophora Japonica	Deciduous	53	40	16	No Observable Problems	In lawn
VO-16	Japanese pagoda	Sophora Japonica	Deciduous	56	56	22	No Observable Problems	In lawn
VO-17	Green Ash	Fraxinus pennsylvanica	Deciduous	47	45	31	Most limbs have been tip pruned with a lot of sucker growth. Mistletoe present throughout.	Surrounded by asphalt that is lifting,
VO-18	Green Ash	Fraxinus pennsylvanica	Deciduous	34	28	11	Appears to have some diseased limbs surface roots, black sap on trunk	In lawn,
VO-19	Citrus	Citrus	Evergreen	11	6	1	Not much of a tree, and should be removed due to the very large thorns at the children's level	
VO-20	Hollywood Juniper	Juniperus chinensis	Evergreen	34	27	22	Strong lean to NW away from building	
VO-21	Evergreen Pear	Pyrus kawakamii	Evergreen	28	32	15	Very close to building canopy	
VO-22	Chinese hackberry	Celtis sinensis	Deciduous	42	28	11	Dual leader at 6', mistletoe present	
VO-23	Chinese Hackberry	Celtis sinensis	Deciduous	56	73	19	Minor surface roots near base, noticeable scar at 7' on trunk	
VO-24	Ornamental Pear	Pyrus calleryana	Deciduous	42	34	13	Surface roots, lopsided to the north	
VO-25	London Plane	Platanus x acerifolia	Deciduous	67	62	23	Some minor limbs have fallen in latest storm and are around the base	
VO-26	Chinese Pistache	Pistacia chinensis	Deciduous	56	51	22	No Observable Problems	In a small planter and is lifting adjacent concrete slightly

Data Collection - Valley Oak Preschool/Da Vinci Charter Academy - Tree Data

VO-27	Chinese Pistache	<i>Pistacia chinensis</i>	Deciduous	39	34	7	6 main branches coming from the same spot, will probably be a problem down the road	
VO-28	Chinese Hackberry	<i>Celtis sinensis</i>	Deciduous	67	84	36	Mistletoe throughout, several dead branches, concrete is lifting around tree	
VO-29	Japanese Flowering Crabapple	<i>Malus floribunda</i>	Deciduous	19	16	7	Trunk damage at base, broken branches need pruning in canopy	
VO-30	Redwood	<i>Sequoia sempervirens</i>	Evergreen	65	23	26	No Observable Problems	Memorial plaque for Rachelle Warden
VO-31	Redwood	<i>Sequoia sempervirens</i>	Evergreen	71	31	31	Defoliating/broken branches on south side of trunk	
VO-32	Mulberry	<i>Morus alba</i>	Deciduous	12	8	1	Multiple trunks from base	
VO-33	Crape myrtle	<i>Lagerstroemia indica</i>	Deciduous	21	16	4	No Observable Problems	
VO-34	Crape myrtle	<i>Lagerstroemia indica</i>	Deciduous	21	18	5	Suckering at branches	
VO-35	Crape myrtle	<i>Lagerstroemia indica</i>	Deciduous	18	18	5	Suckering at base, some suckering in canopy	
VO-36	Crape myrtle	<i>Lagerstroemia indica</i>	Deciduous	18	18	5	Suckering at base and some in canopy	
VO-37	California pepper tree	<i>Schinus molle</i>	Evergreen	47	44	21	Dead branches needs pruning out of canopy	
VO-38	California pepper tree	<i>Schinus molle</i>	Evergreen	37	39	28	Broken canopy that needs attention immediately, surface rooting, dead branches need pruning out of canopy	
VO-39	London plane	<i>Platanus x acerifolia</i>	Deciduous	42	29	10	No Observable Problems	
VO-40	Black Walnut	<i>Juglans nigra</i>	Deciduous	62	56	28	Mistletoe, some dead branches, very close to BF	
VO-41	Chinese Pistache	<i>Pistacia chinensis</i>	Deciduous	42	45	12	Lopsided on NE side due to proximity of adjacent tree canopy	In lawn
VO-42	Chinese Hackberry	<i>Celtis sinensis</i>	Deciduous	42	45	16	Mistletoe in one spot, minor surface roots, in lawn, some dead branches	
VO-43	Chinese Hackberry	<i>Celtis sinensis</i>	Deciduous	59	62	25	Mistletoe in several spots. Minor dead branches, slightly lopsided to the south	In lawn
VO-44	Chinese Tallow	<i>Sapium sebiferum</i>	Deciduous	51	28	11	Extremely lopsided due to adjacent tree canopy, surface roots in lawn	
VO-45	Chinese Tallow	<i>Sapium sebiferum</i>	Deciduous	62	42	20	lopsided due to adjacent tree canopy, some sucker growth on branches	In playground bark
VO-46	Chinese Tallow	<i>Sapium sebiferum</i>	Deciduous	51	31	20	lopsided due to adjacent tree canopy, some sucker growth on branches, surface roots	Edge of playground bark
VO-47	Chinese Pistache	<i>Pistacia chinensis</i>	Deciduous	34	17	9	Poor form, too close to adjacent tree, most limbs are going to SW	
VO-48	Chinese Pistache	<i>Pistacia chinensis</i>	Deciduous	42	28	9	Lopsided form, too close to adjacent tree, most limbs are going to SW, damage at base of trunk	
VO-49	Chinese Pistache	<i>Pistacia chinensis</i>	Deciduous	42	34	13	broken branch	
VO-50	Redwood	<i>Sequoia sempervirens</i>	Evergreen	96	35	35	No Observable Problems	
VO-51	Redwood	<i>Sequoia sempervirens</i>	Evergreen	62	28	17	No Observable Problems	Vines starting to grow up trunk, less than a foot from concrete
VO-52	Redwood	<i>Sequoia sempervirens</i>	Evergreen	62	28	23	No Observable Problems	Vines starting to grow up trunk
VO-53	Redwood	<i>Sequoia sempervirens</i>	Evergreen	64	28	23	No Observable Problems	Vines starting to grow up trunk
VO-54	Japanese Black Pine	<i>Pinus thunbergiana</i>	Evergreen	87	56	25	Half dead, most top, noticeable trunk damage at 4-5'	
VO-55	Japanese Black Pine	<i>Pinus thunbergiana</i>	Evergreen	107	34	28	some dead branches	

VO-56	Aleppo Pine	Pinus halepensis	Evergreen	101	56	25	one of three trunks is completely dead, multi split at 4'	
VO-57	Aleppo Pine	Pinus halepensis	Evergreen	79	51	27	Poor form, dual leader at 8'	
VO-58	Aleppo Pine	Pinus halepensis	Evergreen	107	51	22	multi trunk near base, next to pole transformer	
VO-59	Aleppo Pine	Pinus halepensis	Evergreen	87	34	24	severe lean to south , no branches on opposite side	
VO-60	Aleppo Pine	Pinus halepensis	Evergreen	90	42	35	Multi trunk 20' up, poor form, Borden branches	
VO-61	Aleppo Pine	Pinus halepensis	Evergreen	90	37	25	lopsided due to power line pruning, poor form, growing into adjacent tree, overlapping limbs	
VO-62	Aleppo Pine	Pinus halepensis	Evergreen	90	42	29	Dense growth low, poor structure	
VO-63	Aleppo Pine	Pinus halepensis	Evergreen	90	64	40	Lean to west. Multiple leaders at 10', pruned on east side due to power lines, dead limbs below	
VO-64	Valley Oak	Quercus lobata	Deciduous	28	17	8	Poor structure due to pruning under power line. Should remove	Inches from fence
VO-65	Valley Oak	Quercus lobata	Deciduous	31	17	5	crowded from adjacent pine tree branch, damage at base of trunk	
VO-66	Redwood	Sequoia sempervirens	Evergreen	70	50	30	No observable problems	Dual trunk
VO-67	Redwood	Sequoia sempervirens	Evergreen	62	34	16	crowded from adjacent tree, with a slight lean, showing signs of stress	
VO-68	Redwood	Sequoia sempervirens	Evergreen	7	6	2	Half dead, can be removed	
VO-69	Redwood	Sequoia sempervirens	Evergreen	70	34	25	No observable problems	
VO-70	Redwood	Sequoia sempervirens	Evergreen	70	23	16	Dual leader halfway up should be removed	
VO-71	Redwood	Sequoia sempervirens	Evergreen	84	28	18	Lopsided due to adjacent pine tree, may have had branches broken off on south side, sucker growth at base	
VO-72	Aleppo Pine	Pinus halepensis	Evergreen	96	50	30	Has been pruned around power lines, needs additional pruning for shaping, drain inlet at base	
VO-73	Aleppo Pine	Pinus halepensis	Evergreen	42	22	33	The top has been cut down, should remove	
VO-74	Aleppo Pine	Pinus halepensis	Evergreen	96	42	32	Ivy halfway up the trunk, poor form	
VO-75	Valley Oak	Quercus lobata	Deciduous	51	22	10	Minor trunk damage at base, could use some pruning to shape	
VO-76	Aleppo Pine	Pinus halepensis	Evergreen	110	70	39	Poor form, lopsided toward field due to power lines	
VO-77	Redwood	Sequoia sempervirens	Evergreen	49	25	14	Top is thin, may be from rubbing of adjacent tree branch	
VO-78	Valley Oak	Quercus lobata	Deciduous	42	22	8	Extremely heavy amount of gales, trunk damage at base, needs pruning to train	
VO-79	Redwood	Sequoia sempervirens	Evergreen	62	14	14	Poor thin branching, sucker growth at base	
VO-80	Aleppo Pine	Pinus halepensis	Evergreen	90	45	25	Dual leader low, lopsided due to power lines	
VO-81	Valley Oak	Quercus lobata	Deciduous	45	22	9	Trunk damage at base, dual leader at 10', could use some pruning to improve form	
VO-82	Aleppo Pine	Pinus halepensis	Evergreen	90	56	38	some ivy up trunk, poor structure	
VO-83	Valley Oak	Quercus lobata	Deciduous	34	22	6	Trunk damage at base, needs some pruning to improve form	
VO-84	Aleppo Pine	Pinus halepensis	Evergreen	98	56	40	Dual leaders at 10', narrow attachments, poor branching. Lopsided pruning due to power lines, ivy halfway up	

Data Collection - Valley Oak Preschool/Da Vinci Charter Academy - Tree Data

VO-85	Aleppo Pine	Pinus halepensis	Evergreen	40	17	35	Broken leader, should be removed	
VO-86	Aleppo Pine	Pinus halepensis	Evergreen	62	34	45	Covered in ivy halfway up trunk, poor form, dual leaders	
VO-87	Aleppo Pine	Pinus halepensis	Evergreen	95	39	46	Multiple leaders at 10', narrow attachments, poor branching. Lopsided pruning due to power lines	
VO-88	Aleppo Pine	Pinus halepensis	Evergreen	95	39	32	Multiple leaders at 10', narrow attachments, poor branching. Lopsided pruning due to power lines	
VO-89	Aleppo Pine	Pinus halepensis	Evergreen	84	56	40	lopsided pruning due to power lines, dual leader, low crouch, poor branch structure	
VO-90	Aleppo Pine	Pinus halepensis	Evergreen	101	56	25	Low branching trunk to south that is growing into adjacent tree, poor branching structure	
VO-91	Aleppo Pine	Pinus halepensis	Evergreen	76	56	24	Poor branching structure, lopsided towards East due to power lines on west side, ivy at base	
VO-92	Aleppo Pine	Pinus halepensis	Evergreen	107	56	38	Poor branching form, covered in ivy halfway up the tree, most growth is on East side due to power lines on west side	
VO-93	Valley Oak	Quercus lobata	Deciduous	39	39	11	No Observable Problems	Dense canopy, in lawn
VO-94	Valley Oak	Quercus lobata	Deciduous	45	39	13	No Observable Problems	In Lawn
VO-95	Valley Oak	Quercus lobata	Deciduous	56	50	18	No Observable Problems	In lawn
VO-96	Valley Oak	Quercus lobata	Deciduous	56	56	21	No Observable Problems	In lawn
VO-97	Valley Oak	Quercus lobata	Deciduous	40	34	10	damage at base of trunk, dense canopy	
VO-98	Valley Oak	Quercus lobata	Deciduous	40	28	10	Lot of sucker/superficial growth on branches	May be worth having an arborist review
VO-99	Valley Oak	Quercus lobata	Deciduous	40	28	9	No Observable Problems	In lawn
VO-100	Valley Oak	Quercus lobata	Deciduous	56	48	19	Dense canopy, otherwise no observable problems	In lawn